



南京農業大學

Nanjing Agricultural University



Introduction to College of Public Administration (CPA) and College of Land Management (CLM)

Shi Xiaoping



College of Land Management (CLM) History

- Disciplines of Land economics and land use at Jinling University (1914) and National Central University (1917), the forerunners of NAU.
 - Prof. Jone Lossing Buck (survey in 22 provinces, 168 spots and interview 38256 farm households/ China Land Utilization)
 - Prof. Qiao Qiming and Prof. Zhang Decui
- Dept. of Resource Economics and Land Management in Nanjing Agricultural University (1952-1991)
- CLM, established on November 28th, 1992



College of Land Management (CLM) Position

- The first college pertaining to land use policy and natural resource management in China.
- The first Ph.D. Program of Land Economics & Management in China (1993)
- Leading position in education and research in land resource management



College of Public Administration

- In 2003, the College of Public Administration was established mainly based on the college of Land Management
- In 2005, public administration was approved of primary discipline doctoral degree award



Organization

Four departments

- Land resource management
- Resource, environment and urban-rural planning
- Public administration
- Public economics and policy

Staff

- 65 member staffs
- 16 professors and 19 associate professors



Research

Core Research Fields:

- Land Economics & Policy
- Land Law and Administration
- Sustainable Land Use
- Land Use Planning and Designing
- Resources and Environmental Economics
- Cadastre and GIS Application to land resource management
- Public economic and policy
- Social security



Research Centers:

- China Centre for Land Policy Research (CCLP), Nanjing Agricultural University
- International Resources & Environmental Economic Research Institute
- Institute of Urban-rural Planning
- Institute of Public Policy
- Human Resource Management Research Center



Teaching Programs

Undergraduate:

- Land Resource Management
- Resources, Environment and Rural Planning
- Public Administration
- Labour and Social Security
- Human Resource Management



MSc. Programs

- Population, Resource and Environmental Economics
- Land Resource Management
- Public Administration
- Education Economic and Management
- Management of Public Administration (MPA)
- Cartography and Geographical Information System

Ph.D. Programs

- Land Resource Management
- Public Administration
- Education Economic and Management



Students

- 1200 undergraduates
- More than 300 graduate students



International Exchanges:

The Netherlands

Wageningen University - research, education, staff exchange

Institute of Social Studies - research, education, staff exchange

University of Groningen – research

Germany

Humboldt University Berlin – research and staff exchange

Russia

Moscow University of Land Engineering - research, staff exchange

Japan

Nihon University - staff exchange

Canada

University of British Columbia - research

Norway

University of Life Science - research, education, staff exchange

USA

International Food Policy Research Institute (IFPRI) - research



Finished International Projects:

- Economic policy reform and sustainable land use in LDCs (*EU fifth framework Project*)
- Seeking Synergy between Urban Growth Horticulture and the Environment in Asian Metropolises (*EU fifth framework Project*)
- Strengthening education and research in environmental and resource economics at Nanjing Agricultural University (*Dutch government project SAIL-program*)

Finished Domestic Projects:

- Farm households' decision-making and sustainable land use management (*National Fund of Natural Sciences*)
- Economic growth and farmland conversion in China: mechanism and public policy (*National Fund of Natural Sciences*)



Finished Domestic Projects:

- Economic growth and sustainable land use planning in coastal areas (*Ministry of Land Resources*)
- Economic relations of land requisition and transfer in China (*Ministry of Land Resources*)
- Economic benefit distribution of land requisition: behavior and mechanism of land conversion (*Ministry of Land Resources*)
- Public policy analysis of land use allocation in different sectors (*Ministry of Education*)
- Natural Resource Accounting: methodology and its application to Jiangsu Province (*Jiangsu Committee of S & T*)



Research Package 1

Land Economy and Policy

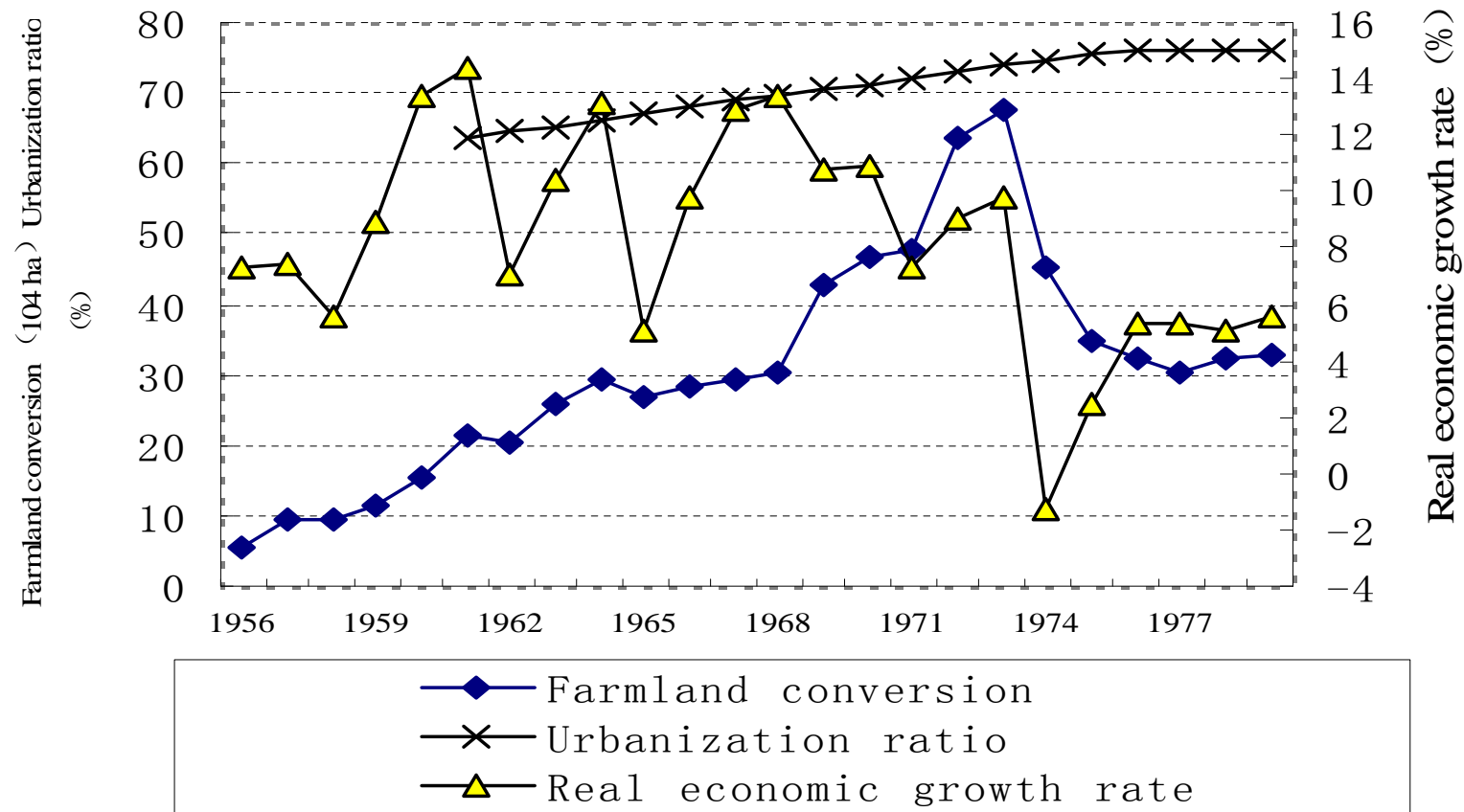
- A:** Farmland Conversion Process
- B:** Land Requisition System Reforms
- C:** Urban Land Transferring and Land Market Development
- D:** Farmland Transferring and Sustainable Land Use



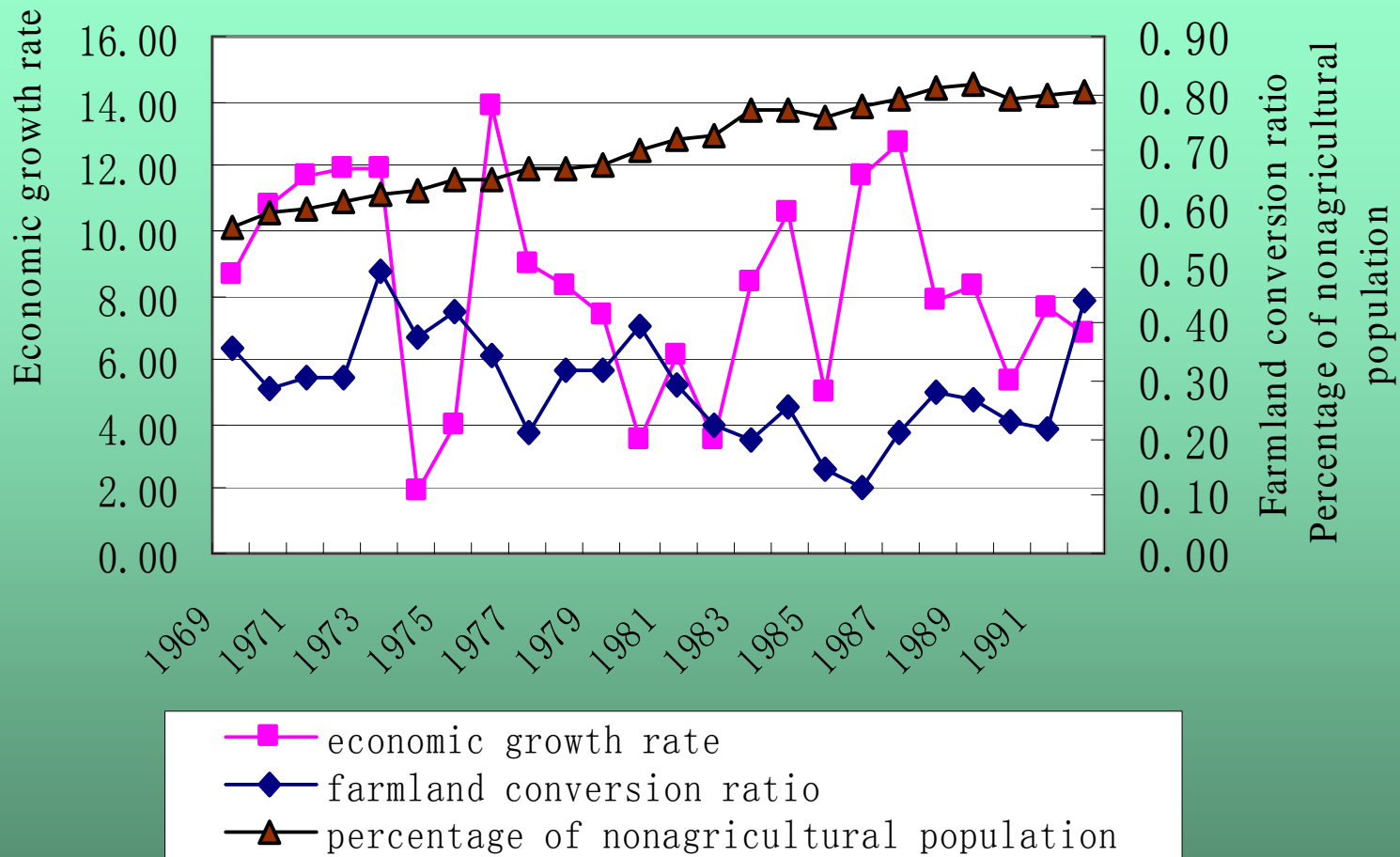
Research Package 1

1-A: Farmland Conversion Process

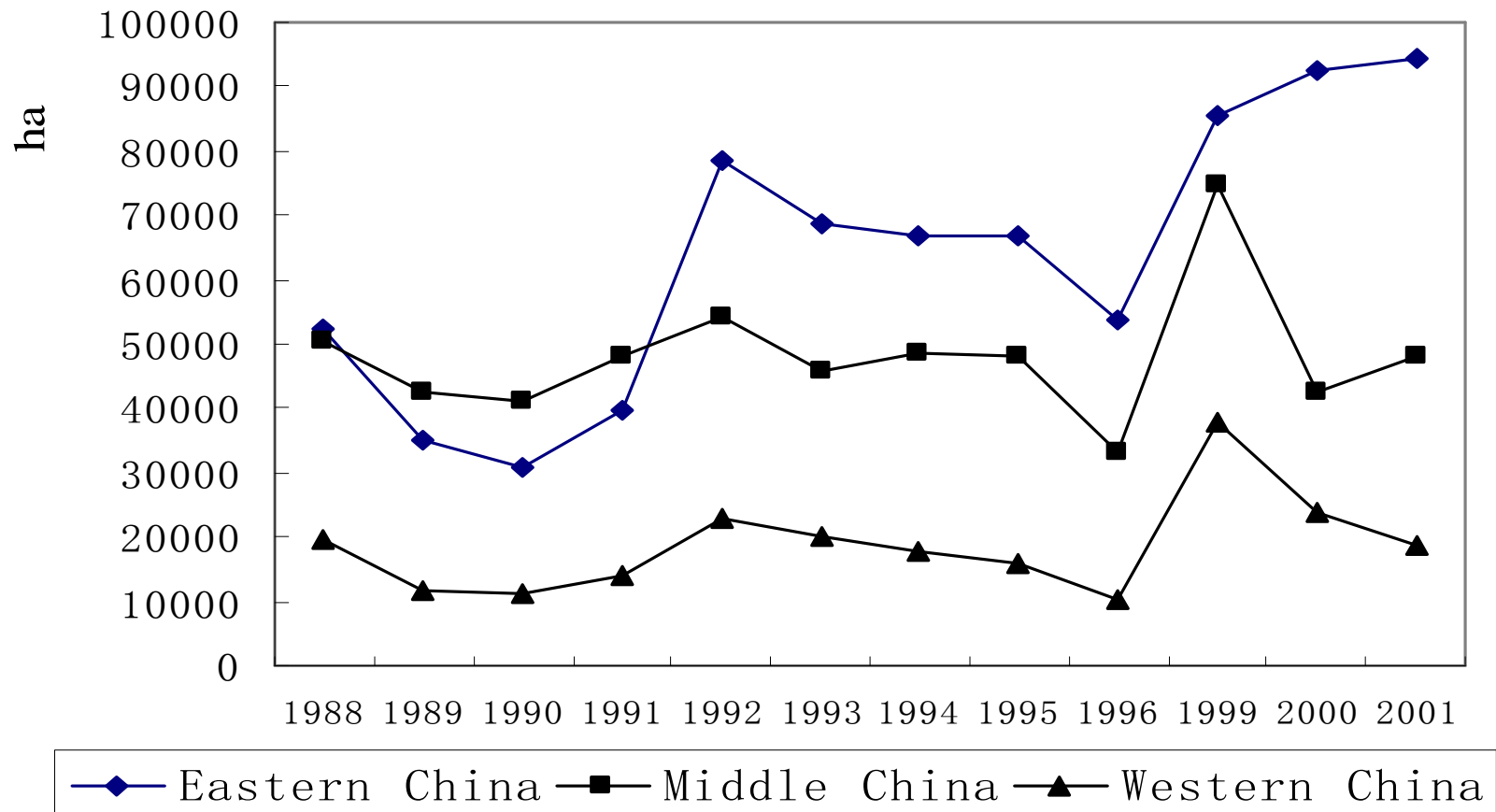
- Experience from Japan and Taiwan
 - Farmland conversion: an inverted “U” shape curve
 - Rapid farmland conversion during early stage of industrialization
 - Farmland conversion decreased during the late stage of industrialization
- Farmland conversion in mainland China
 - Farmland conversion is a basic characteristics for economic development in Mainland China
 - Farmland conversion shows an increasing trend



Economic Growth and Farmland conversion in Japan



Economic Growth and Farmland conversion in Taiwan



The Comparison of Farmland Conversion in Different Regions of Mainland China



1-D: Farmland Transferring Markets and Sustainable Use

Rural Farmland Market Development

- Two times farm household interviews in Jiangsu Province (1999-2000/Three counties/six villages/400 household involved)
- Two times village and farm household level interviews in Jiangxi Province (1999-2000/27 villages/1400 households involved)



Three villages interviews in Jiangxi

(in)	Irrigated land / Dry land/ Forest land		
Participating in any land market households	45.8%	6.5 %	0.5%
Share of land transferring in contracted land	37%	17%	10.2%
Share of land transferring in managed land	28%	11.5%	9%
For Participated households			
Share of land transferring in contracted land	85%	136%	-
Share of land transferring in managed land	44%	60%	97%



1-D: Farmland Transferring Markets and Sustainable Use

Farm Household Behaviors and Sustainable Use of Farmland

- Bio-economic models (Jiangsu Province)
 - Price policy reform
 - Soil nutrient changes
- Village wide models (Village SAM and CGEs)
 - Rural factor markets development
 - Input use change
 - Soil nutrient balance/forest land cover change/energy consumption



Research Package 2

Land Use Planning and Management

2-A: Land Use Planning System Studies

2-B: Methods and Tools Development for Land Use Planning

2-C: Implementation of Land Use Planning

Map of General Land Use Planning of Tongzhou City



Map of General Land Use Planning
for Dachang District of Nanjing



Research Package 3

Land Price Theory and Land Appraisal

3-A: Urban Land Classification

- Nanjing
- Haimen
-

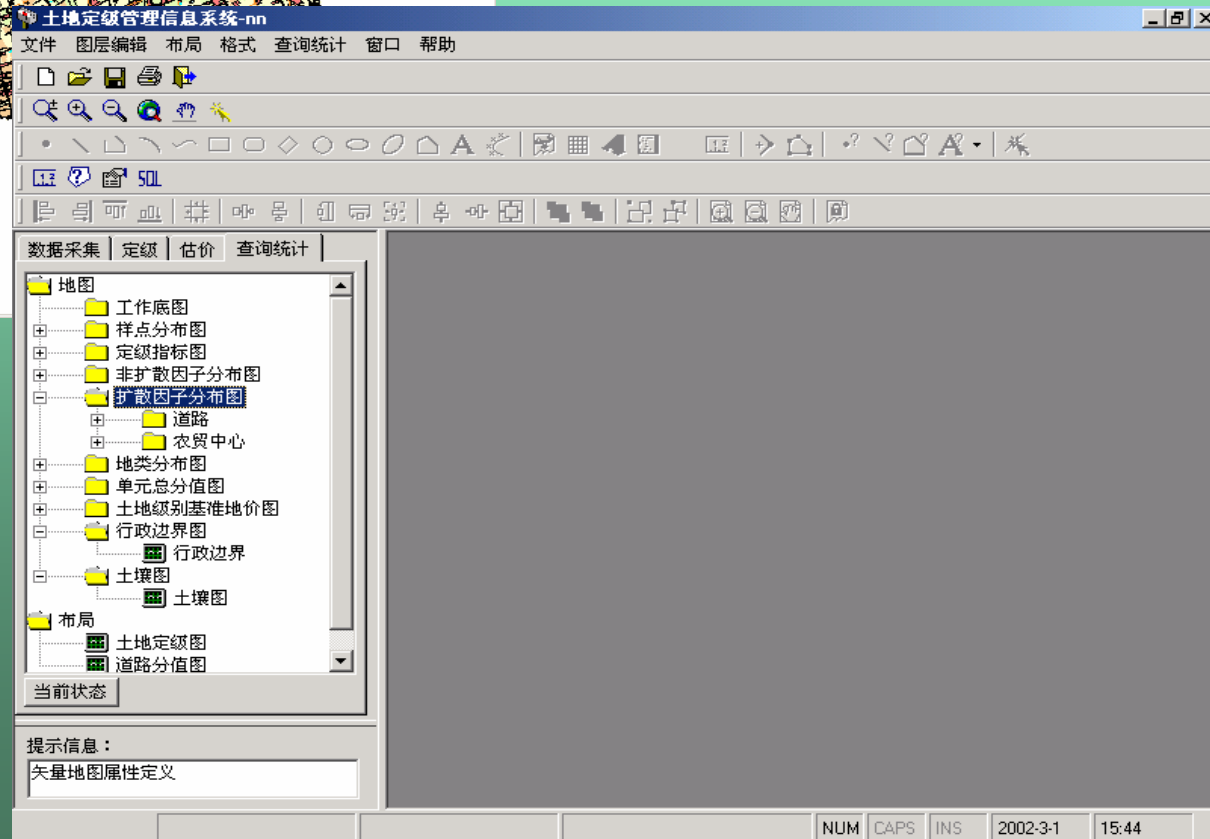
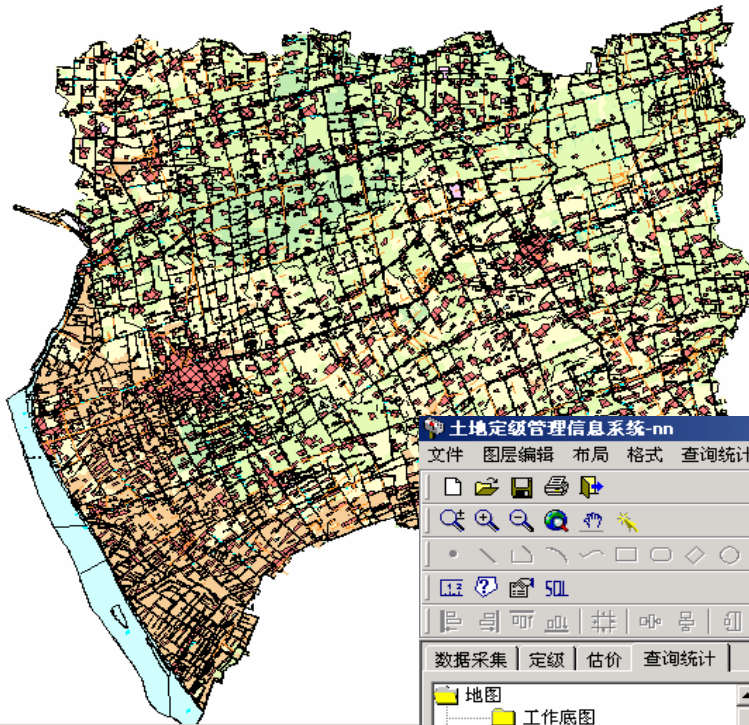
3-B: Farmland Classification

Taixin/Jingtang county

3-C: Land Price Indexes



Map of Farmland Classification of Taixin County, Jiangsu Province



Land Appraisal Management Information System



Research Field 4

Land law and land administration system

4-A: China Land Law System and Land Rights

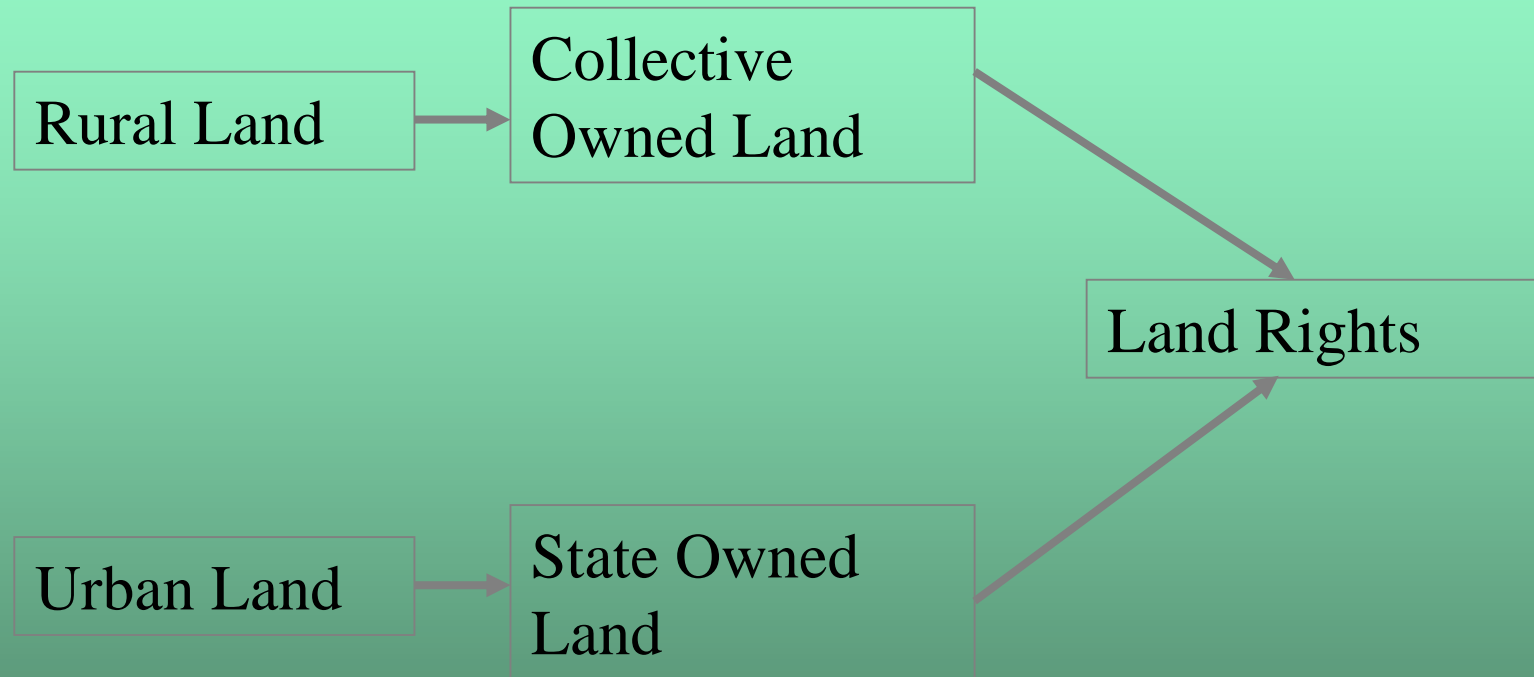
4-B: Rural Land Registration and Land Use

4-C: Land Administration System



Research Field 4

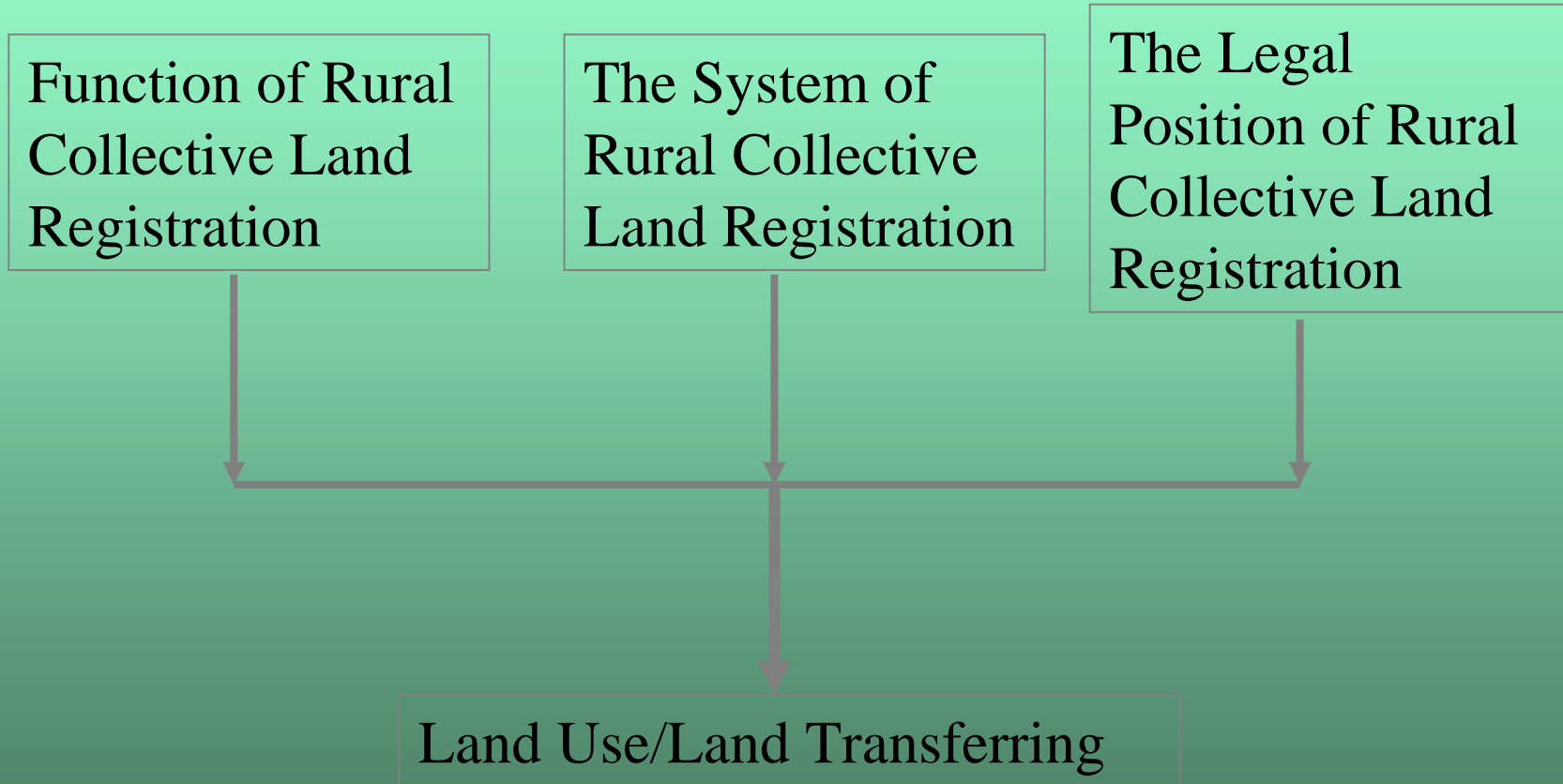
4-A: China Land Law System and Land Rights





Research Field 4

4-B: Rural Land Registration and Land Use





4-C: Land Administration System

- Role of Local government in land administration
- Public policy reforms



Main on-going Projects:

- Sustainable resources use rural China : institutions, policy and market (*Sino-Dutch Strategic Science Alliance Program, KNAW & MOST*)
 - Grassland degradation in Qinghai province (*NAU*)
 - Sustainability of Sloping land Conversion Program in Ningxia
 - Agricultural inputs use change in cultivated land in Jiangxi province (*NAU*)
 - Impact of land conversion in Jiangxi province (*NAU*)
 - Water pollution control in Dianchi Lake, Yunnan Province
 - Payment for environmental service in Beijing Miyong reservoir



Main on-going project

- **Project on Piloting of Rural Land Registration and Certification**
 - **FAO – People's Republic of China**
 - **Land Registration Manuals**
 - **Pilot area in China**



New project

- Land Use Policies and Sustainable Development in Developing Countries (*EU Sixth framework project*)
 - With LEI (WUR) in The Hague
 - Expect to be started on Feb. 2007
- Proland Project: Protecting Farmer's Land and Property Rights in China



Main On-going Projects:

- Land law in China: conceptualization and framework
(*Ministry of Land Resources and NAU*)
- Institutional reform for market-building of collective land
(*Ministry of Land Resources & Jiangsu Foundation of Social Sciences*)
- Classification, evaluation and appraisal of farmland resources: an experimental study (*Ministry of Land Resources*)



China Centre for Land Policy Research (CCLP)

Background

- Increasing demands for the investigation and research on land issues with rapid urbanization and industrialization, especially after China's joining WTO
- There is lack of integrated approaches to land issues from viewpoints of economics, law, planning, sociology, history, politics and information system in China.



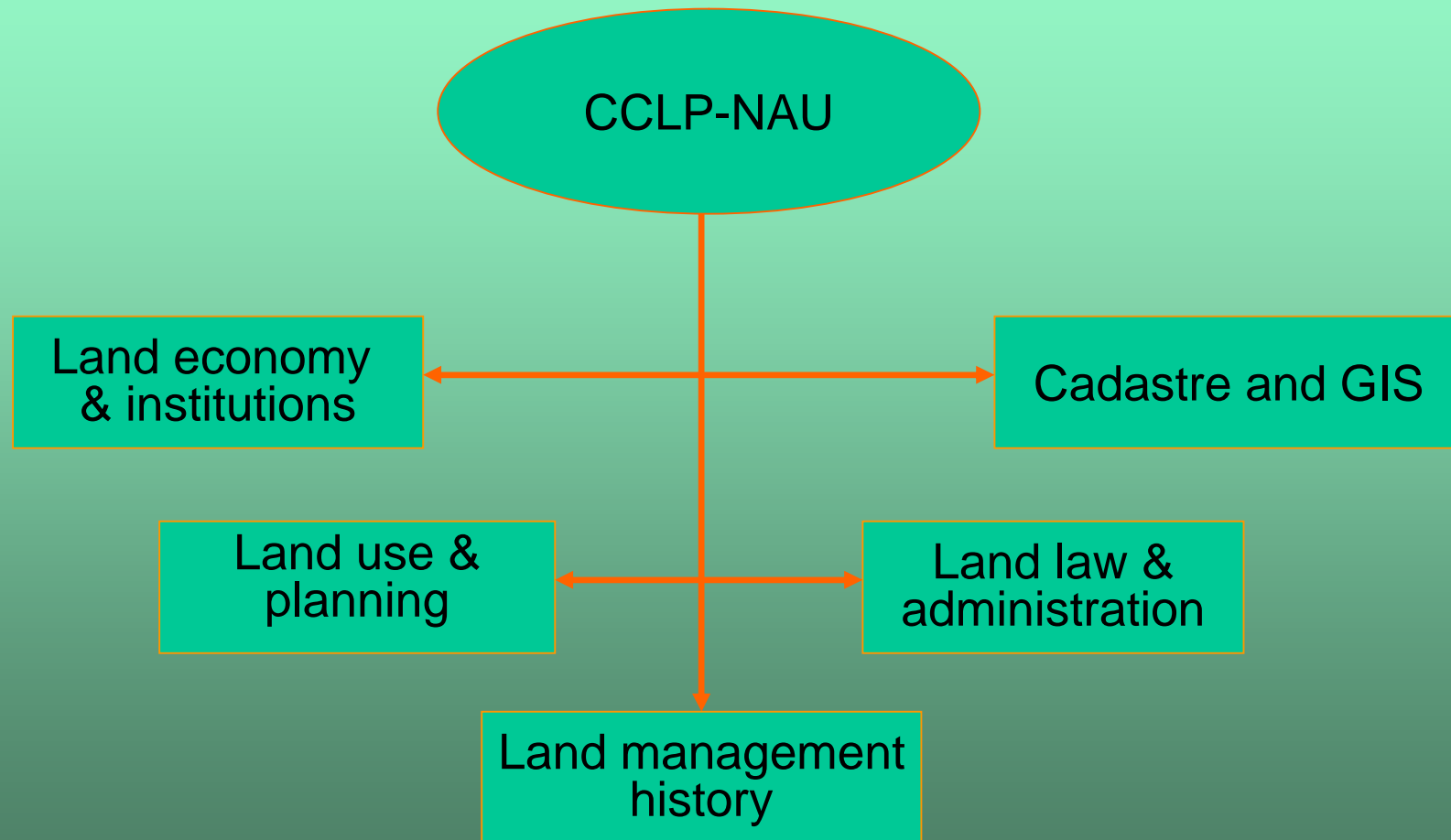
China Center for Land Policy Research

Mission

- Strengthening the research and education capacity and forming a key research institute in national wide on land issues.
- Bridging the research and training cooperation in land policy and management between China, foreign countries and international organization.
- One of leading advisory organizations for land law-makers, land policy-makers at different levels and relevant international organizations.

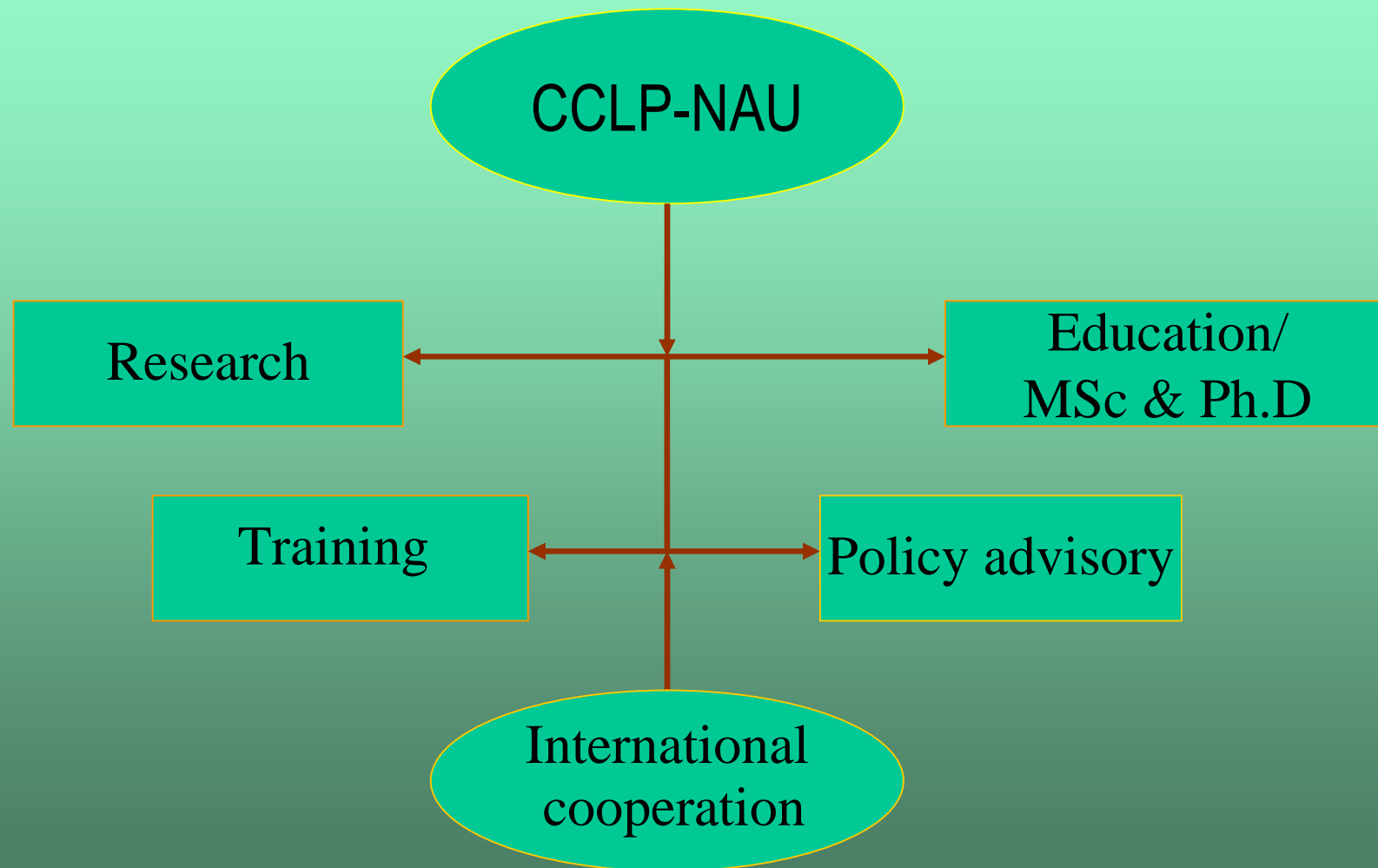


The Structure of Research in CPA





Function of CCLP





Thank you!