

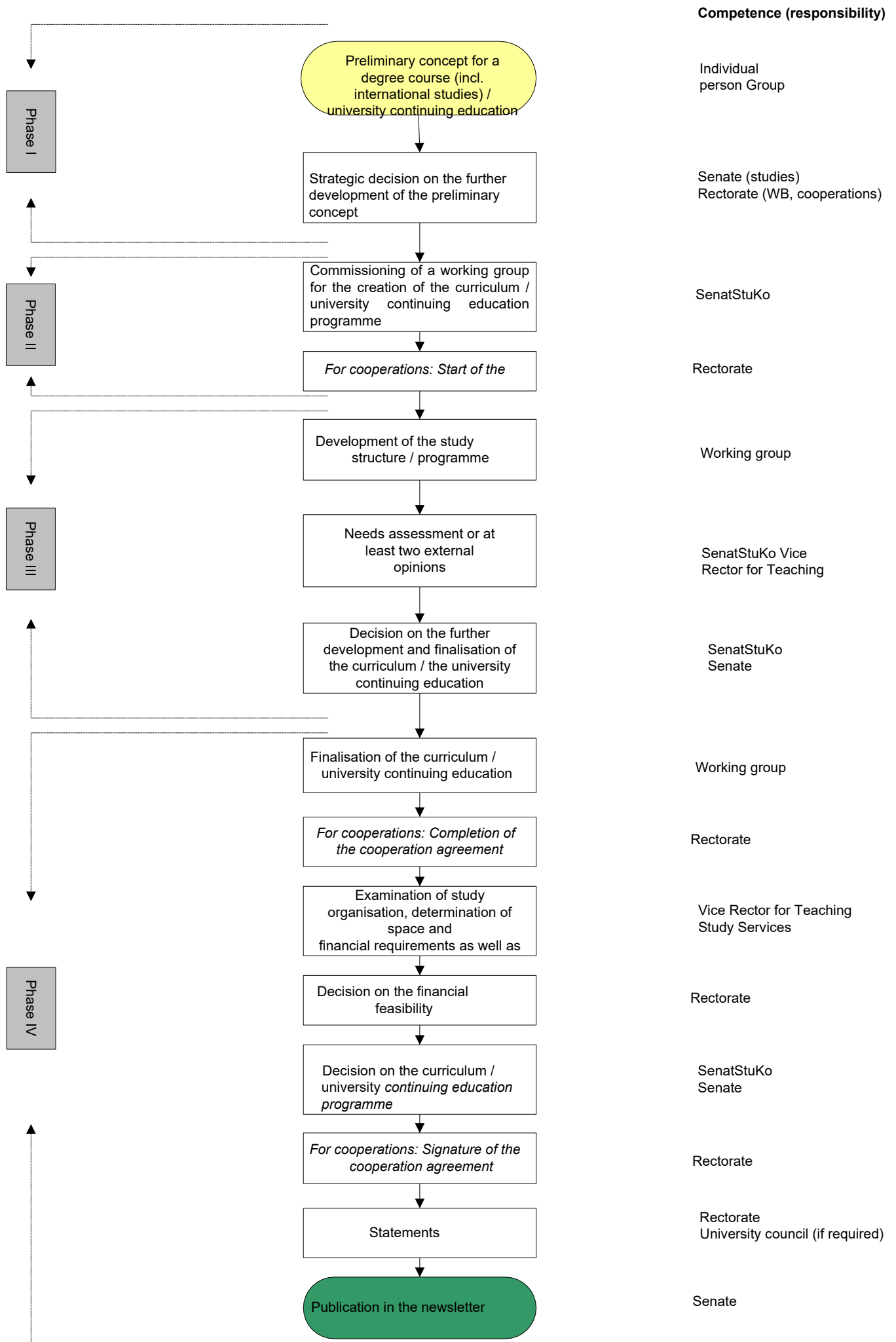


University of Natural Resources and Life Sciences, Vienna
University of Natural Resources and Life Sciences, Vienna

Schedule for the development and fundamental change of studies and university continuing education programmes (categories 1–3)

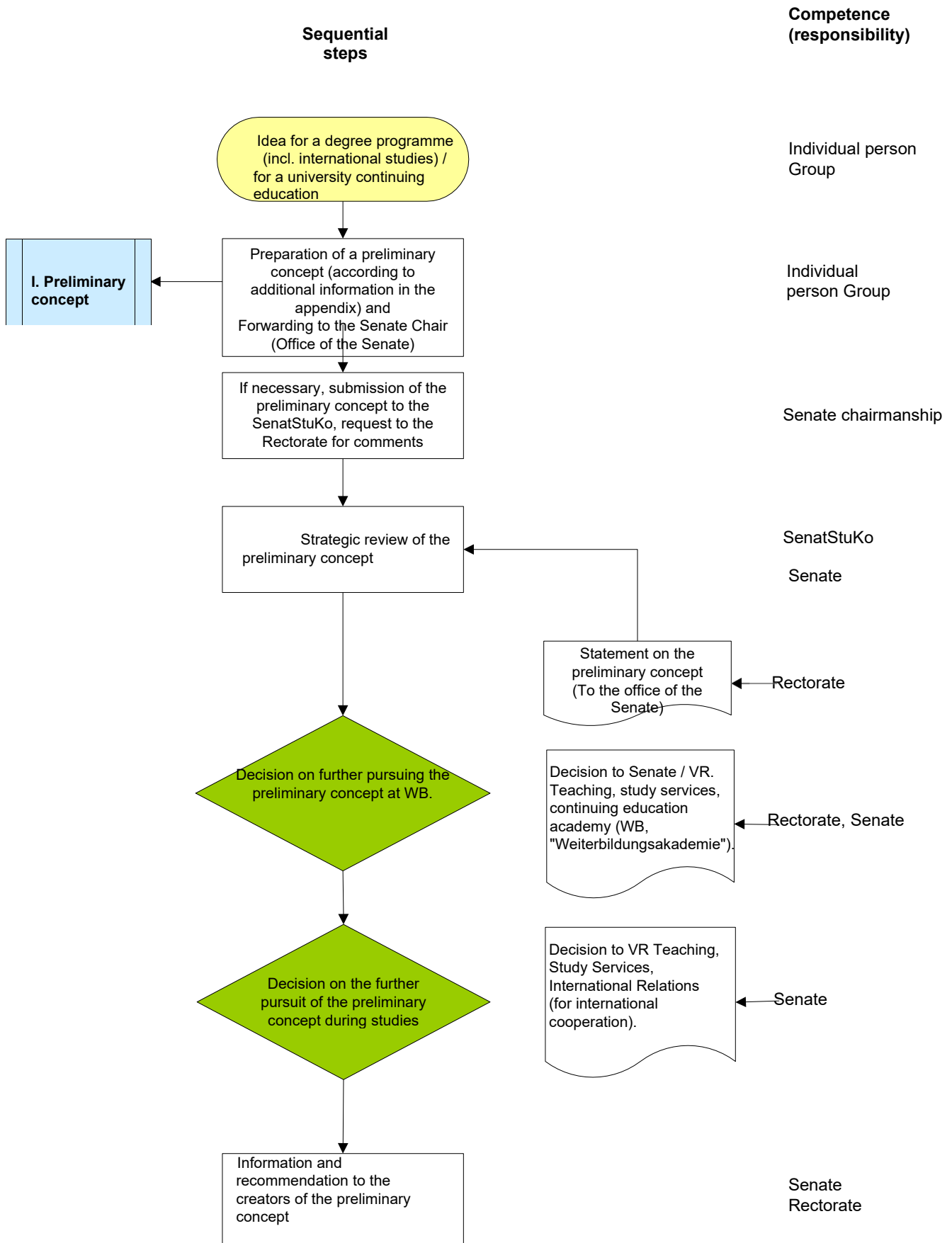


Binding Guideline Flow Chart Overview



Explanatory Recommendation Flow chart – Detailed Presentation

PHASE I Idea – Strategic decision

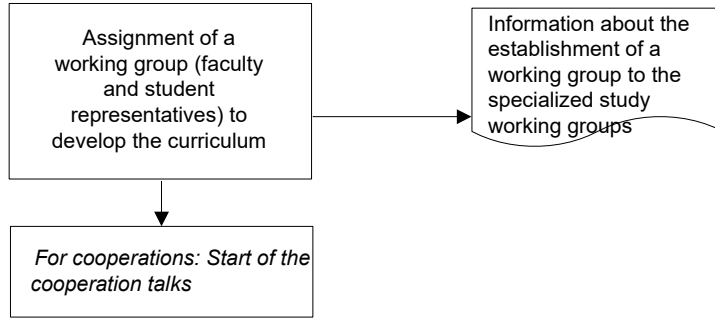


PHASE II
group

Decision on the preliminary concept – establishment of a working

Sequential steps

Competence (responsibility)



SenatStuKo

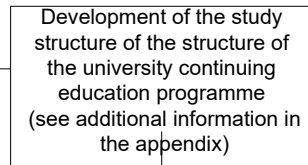
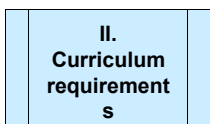
Rectorate

PHASE III

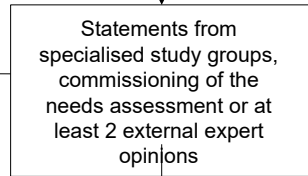
Creation of the structure of the study programme / the continuing education programme – Decision on finalisation

Sequential steps

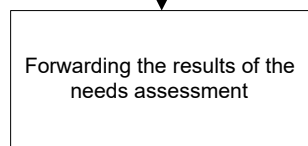
Competence (responsibility)



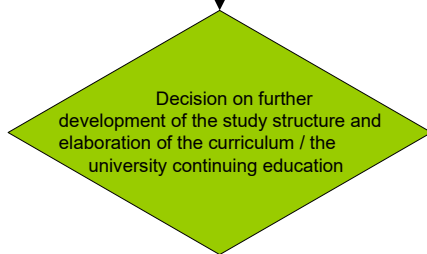
Working group



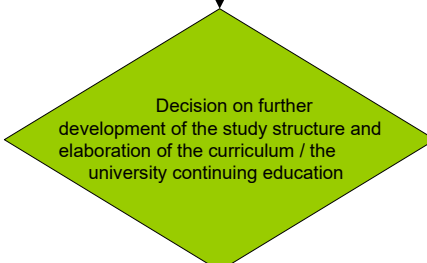
SenatStuKo Vice Rector for Teaching



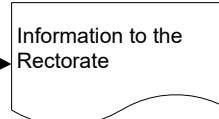
Study Services



SenatStuKo

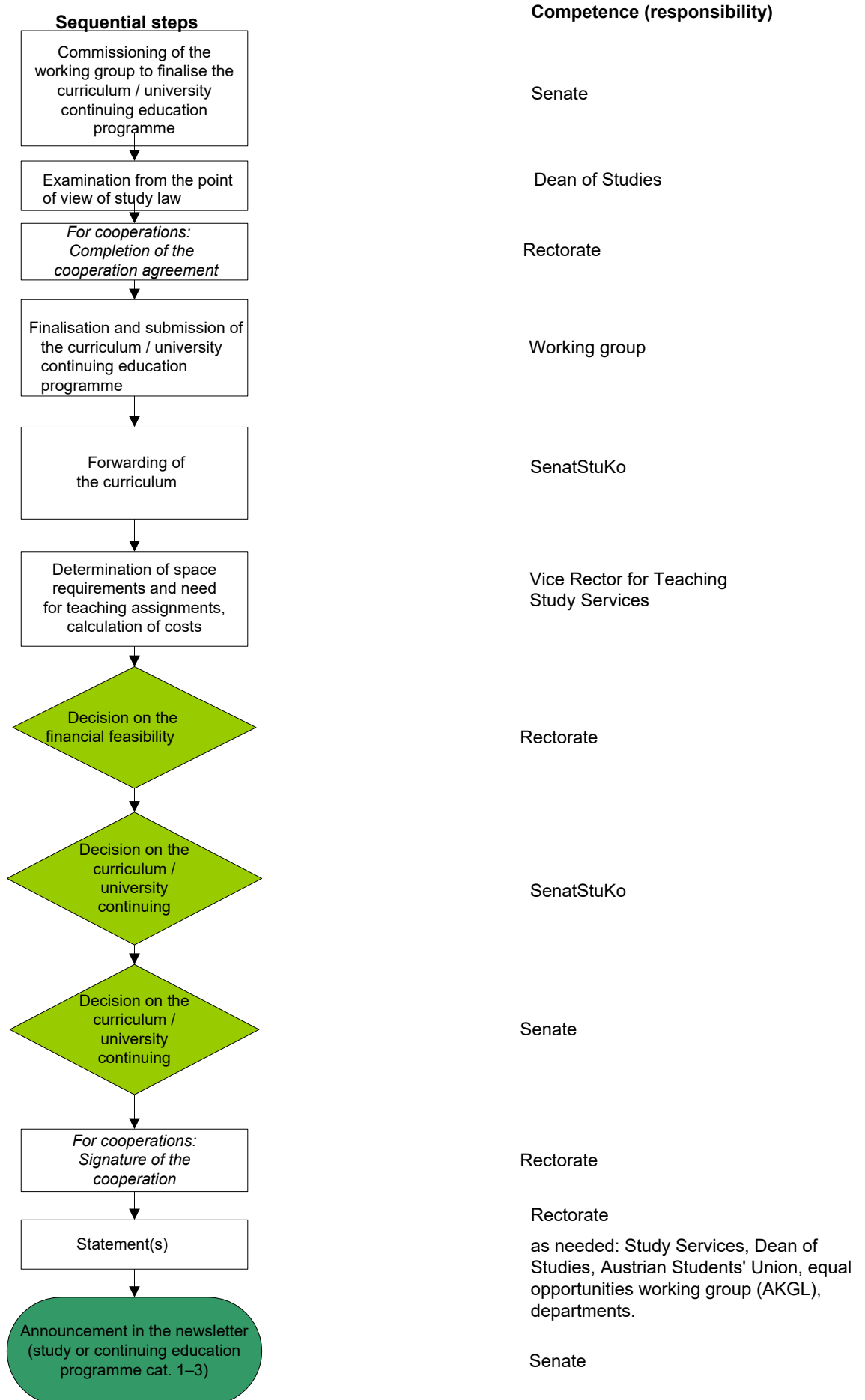


Senate



PHASE IV

Finalisation of the curriculum – publication in the newsletter



ADDITIONAL INFORMATION

on the flowchart for the development and change of studies
and university continuing education programmes

I PRELIMINARY CONCEPT

(Application for Bachelor's and Master's studies, continuing education programmes category 1 or 2)

The preliminary concept for the studies must include the following contents:

1) Contact person

Announcement of the contact person for the submitted idea.

2) Justification for the treatment of the idea

Reasons must be given as to why BOKU should take up this idea for a degree programme or continuing education.

3) BOKU connection

The idea must be clearly related to the BOKU profile.

4) Assignment to a BOKU competence area

The idea should be assignable to at least one of the BOKU competence areas.

5) Required competences

It is necessary to define which specialist competences are available at BOKU for the implementation of the idea and which may need to be newly implemented.

6) Form of the educational offering, the target group(s) and their admission requirements

The form of the educational offering through which the idea is to be implemented is to be defined (Bachelor's and/or Master's degree programme, university course). The target group(s) and their admission requirements is to be defined as well.

7) Qualification profile

A rough qualification profile, i.e. the competences that future graduates should have, is to be drawn up.

8) Mission statement of teaching

The mission statement of BOKU teaching is to be phrased.

9) Resource requirements

The required premises, equipment, and external/internal persons are to be presented in a rough overview.

10) Place of implementation

11) Cooperation partners

12) Considerations regarding financing (own or third party financing)

II CURRICULUM

Requirements for curriculum development:

Bachelor's and Master's degree programmes:

BOKU sample curricula for Bachelor's and Master's degree programmes

University continuing education:

III NEEDS

The SenatStuKo can commission a needs assessment together with the Centre for Teaching. This is not mandatory, but its necessity is determined on a case-by-case basis, as is the exact scope of this analysis. If this is not done, at least two opinions on the curriculum are to be obtained from external experts.